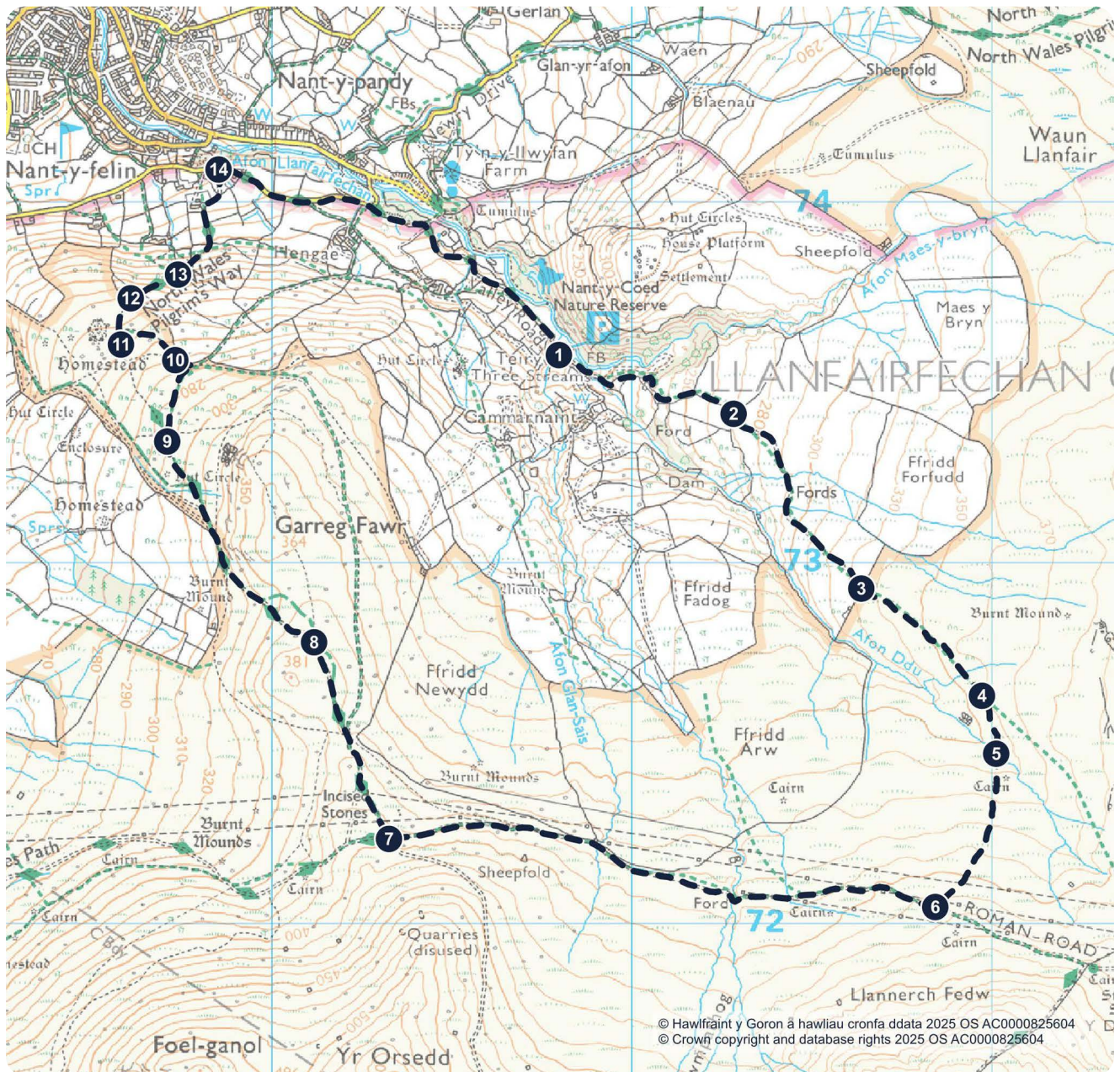




# Llanfairfechan

MODERATE



## Route Overview

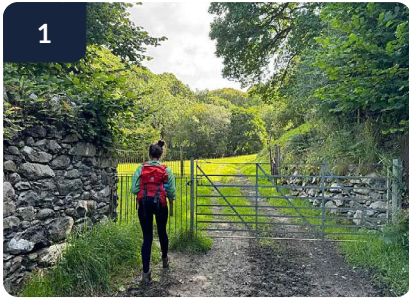
- Distance: 7km (4.3 miles)
- Duration: 4 hours
- Route type: Circular

## Before you start

Read the safety and route grading information on the Eryri National Park Authority website before you start your journey.

[eryri.llyw.cymru](http://eryri.llyw.cymru)

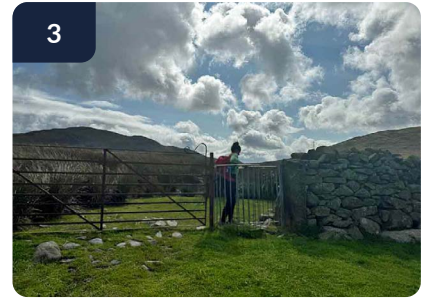




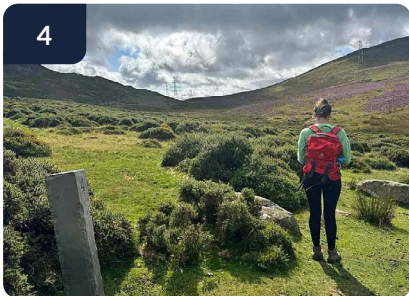
Exit the car park and head on the public footpath adjacent to the car park's entrance. Cross the stream and bear right, following the stone waymarkers along the steep track, up into a field.



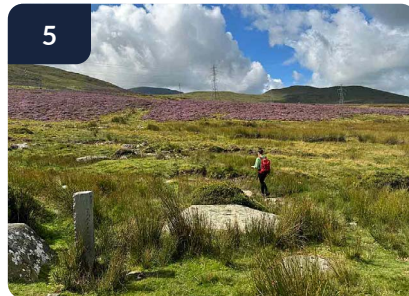
Follow the right-hand boundary of the field until you reach a farm gate with an adjacent kissing gate. Go through the kissing gate and walk along the pasture until you join a track.



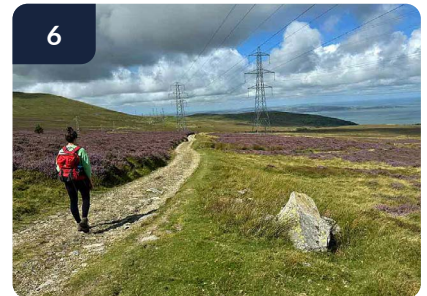
Continue along the track until you reach another farm gate with a kissing gate alongside. Go through the kissing gate and continue along the track.



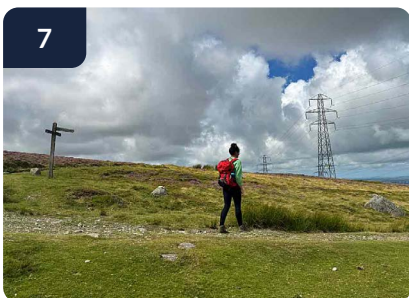
As you make your way over the mountain pasture, you should encounter stone-walled sheep pens on your right-hand side as well as the occasional stone waymarker. Bear right down the slope and towards the stream.



Cross the watercourse and head straight onwards and upwards towards the pylons in the distance. You should come across a stoney track once you've reached the pylons.



At the track, turn right and follow it down towards the coast. This track is a Roman road that was used to travel between the Conwy valley and Caernarfon.



After approximately 1.5km, you will reach a crossroad. This location is known as 'The Meeting of the tracks'. At the signpost take a right turn here and walk along the track towards Llanfairfechan and follow the waymarkers for the North Wales Path.



Continue to keep left, following the signs for the North Wales Path as you skirt around the bottom of Garreg Fawr, keeping the stone wall on your left.



As the stone wall changes direction downhill, you will need to bear right and carry on around the bottom of Garreg Fawr.



You will reach a stone wall and footpath junction where the path splits into different directions. Take the most established path through the gorse. After around 200 metres, you will be near an ancient hut circle and will join another path.



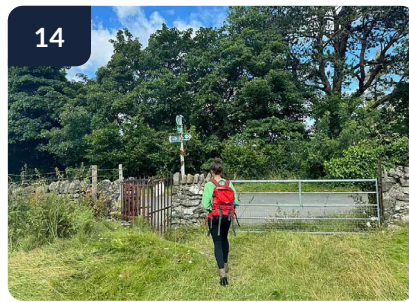
At the stone waymarker take a right turn and follow the path towards the stone wall.



Go through the kissing gate and follow the path downhill.



Pass the bench, turn right and walk carefully down the hill. You will go through farm fields, please leave the gates as you find them.



Go through the kissing gate and turn right and follow the road back to the car park.